



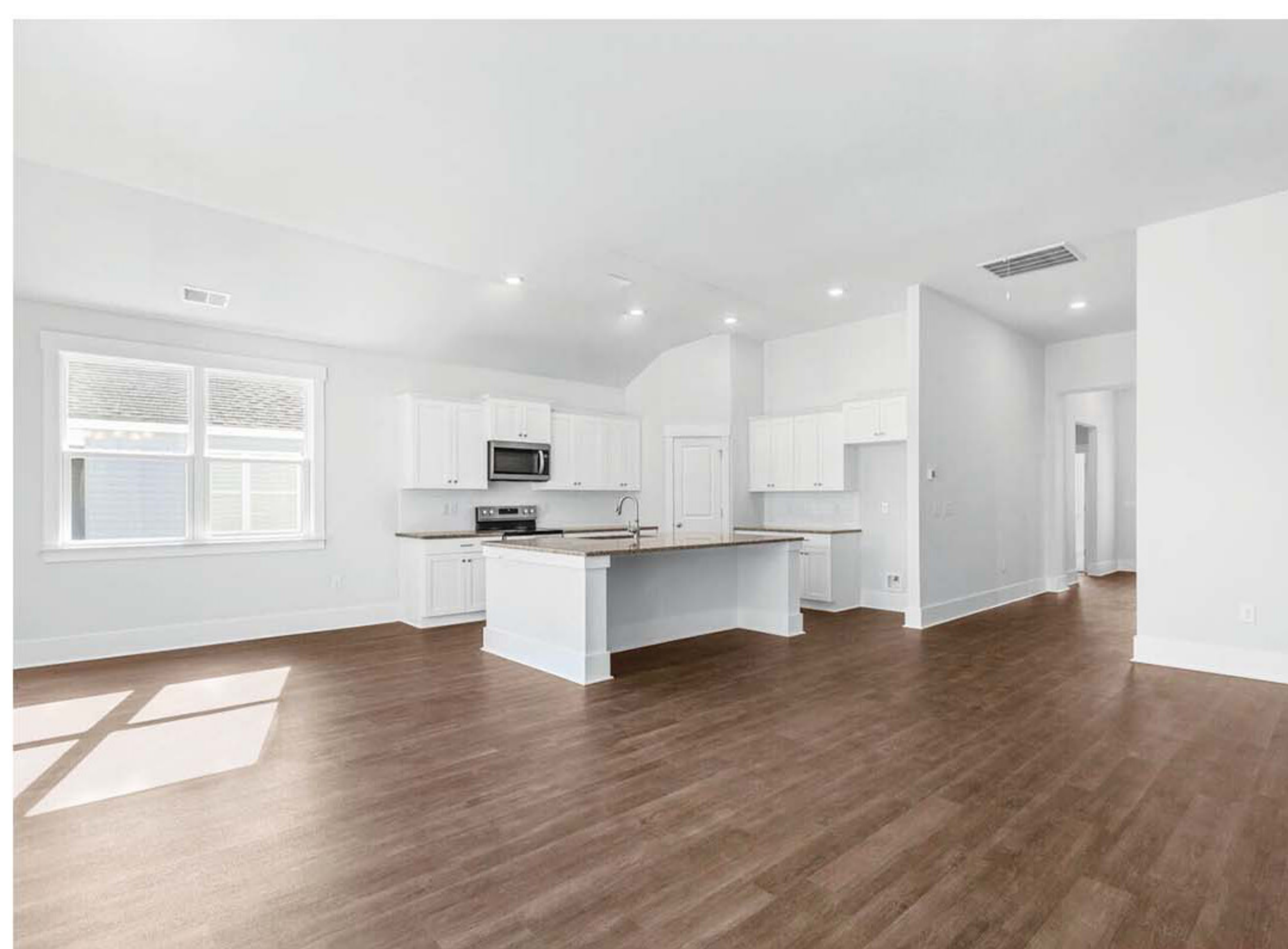
2008 Willowleaf Drive

Leland, NC 28451

910.665.8221

WilmingtonInfo@drhorton.com

Thoughtfully-designed, flexible floor plans catered to today's family lifestyles



Welcome to Grayson Park a thriving master planned community in Leland, Brunswick, NC. The community and amenities also offer a place to escape after a day's work or embrace your active lifestyle. Residents enjoy a fully furnished clubhouse with catering kitchen, elite fitness center, a competition-size swimming pool and kiddie pool, two lighted tennis courts, playground, and walking trails with wooden bridges. At Grayson park you will feel right at home, while still within a moment's drive of activities.

D·R·HORTON[®]
America's Builder

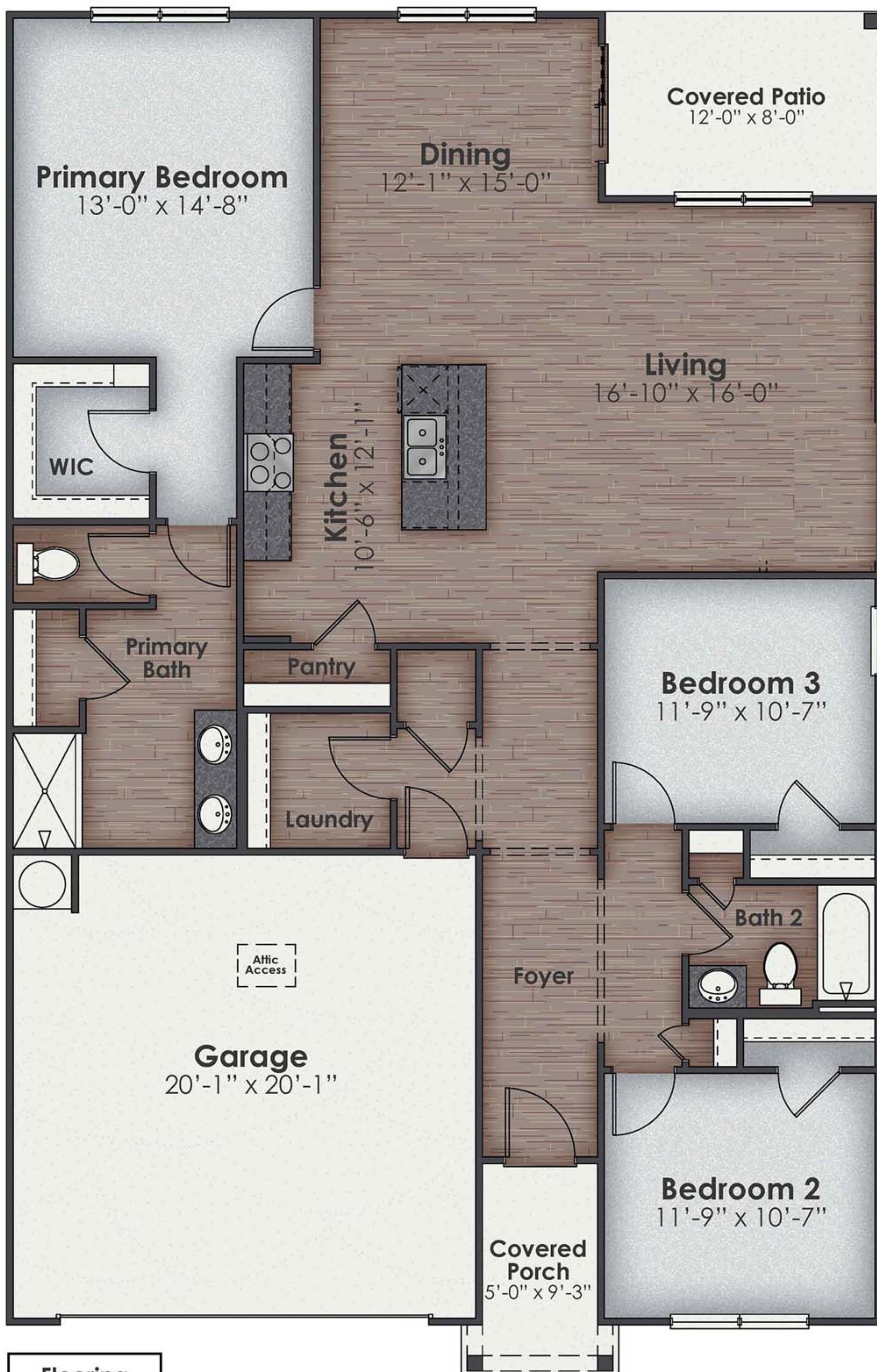
www.drhorton.com/wilmington



Home and community information, including pricing, included features, terms, availability and amenities, are subject to change and prior sale at any time without notice or obligation. ©2023. D.R. Horton, America's Builder. All Homes Constructed by D.R. Horton, Inc., License #29676.

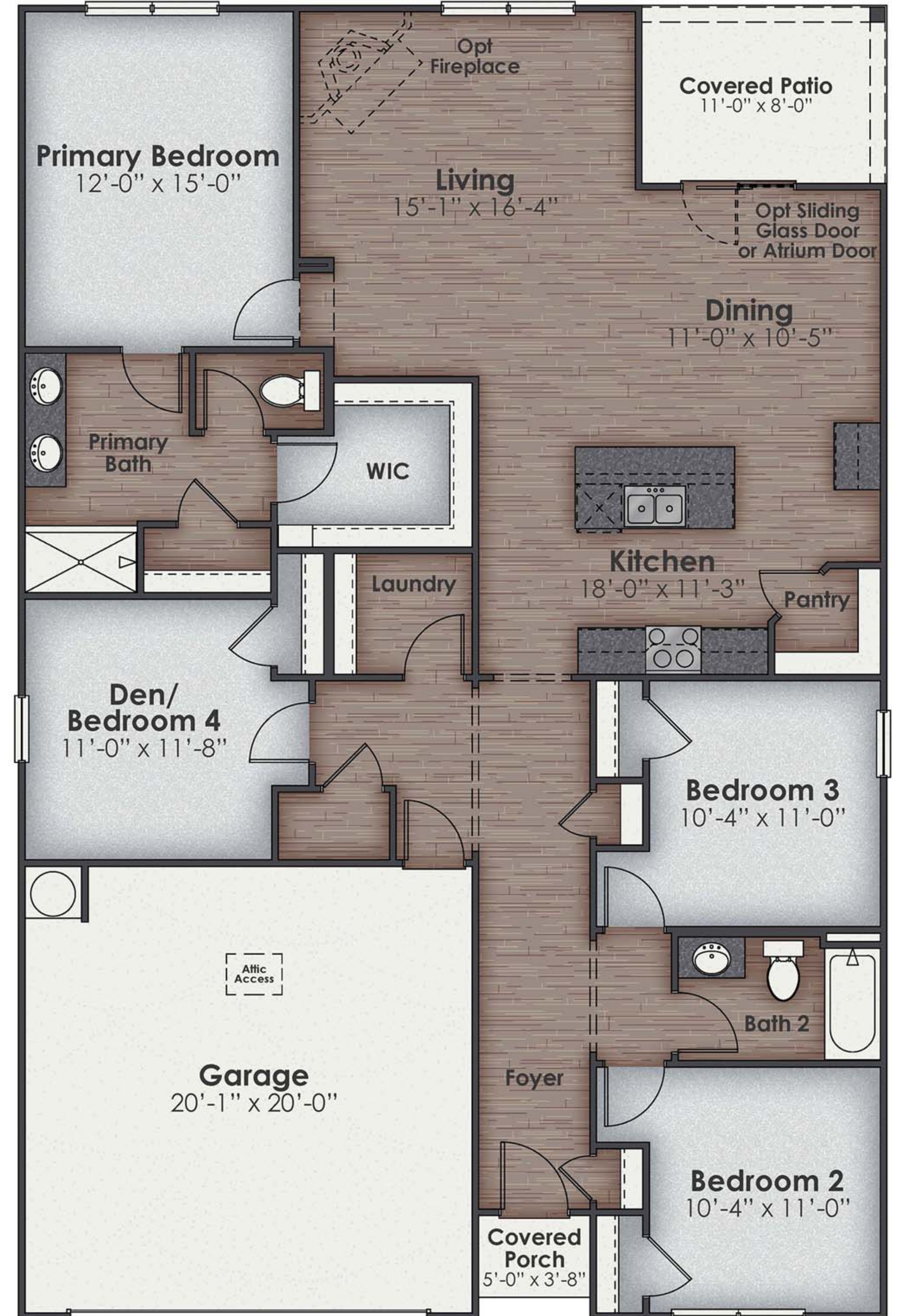
Aria

3 Bedrooms, 2 Baths
1618 Sq. Ft., 2-Car Garage



Cali

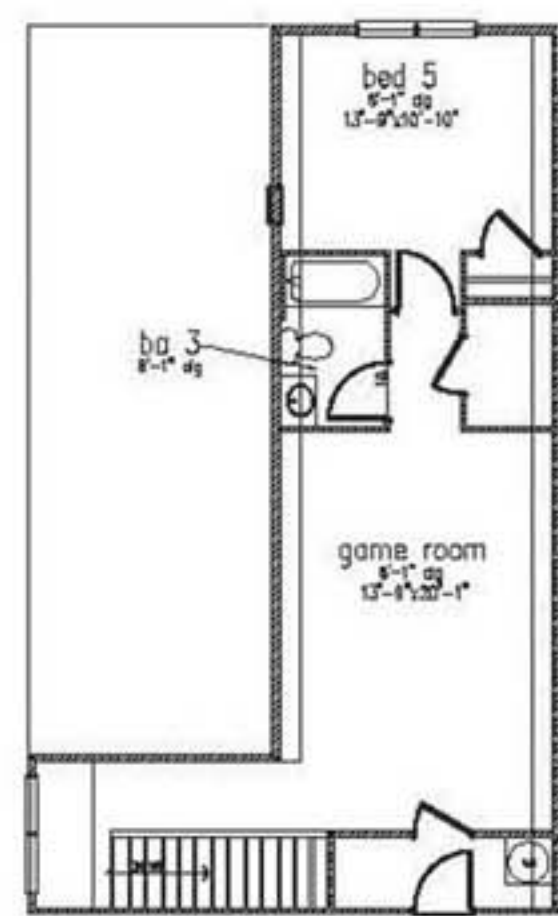
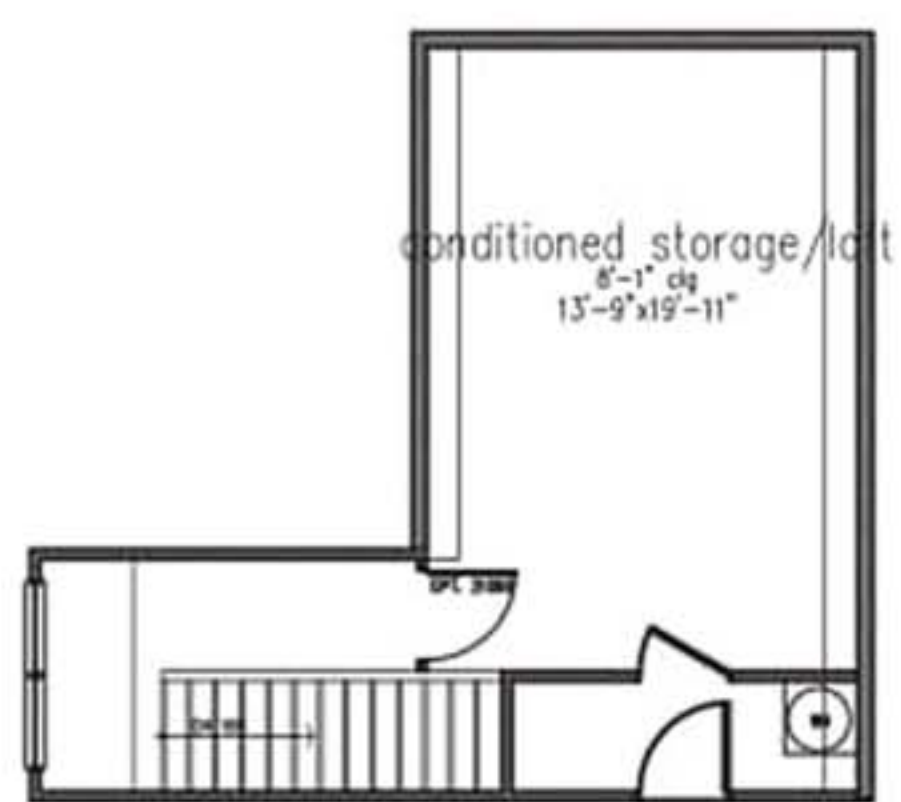
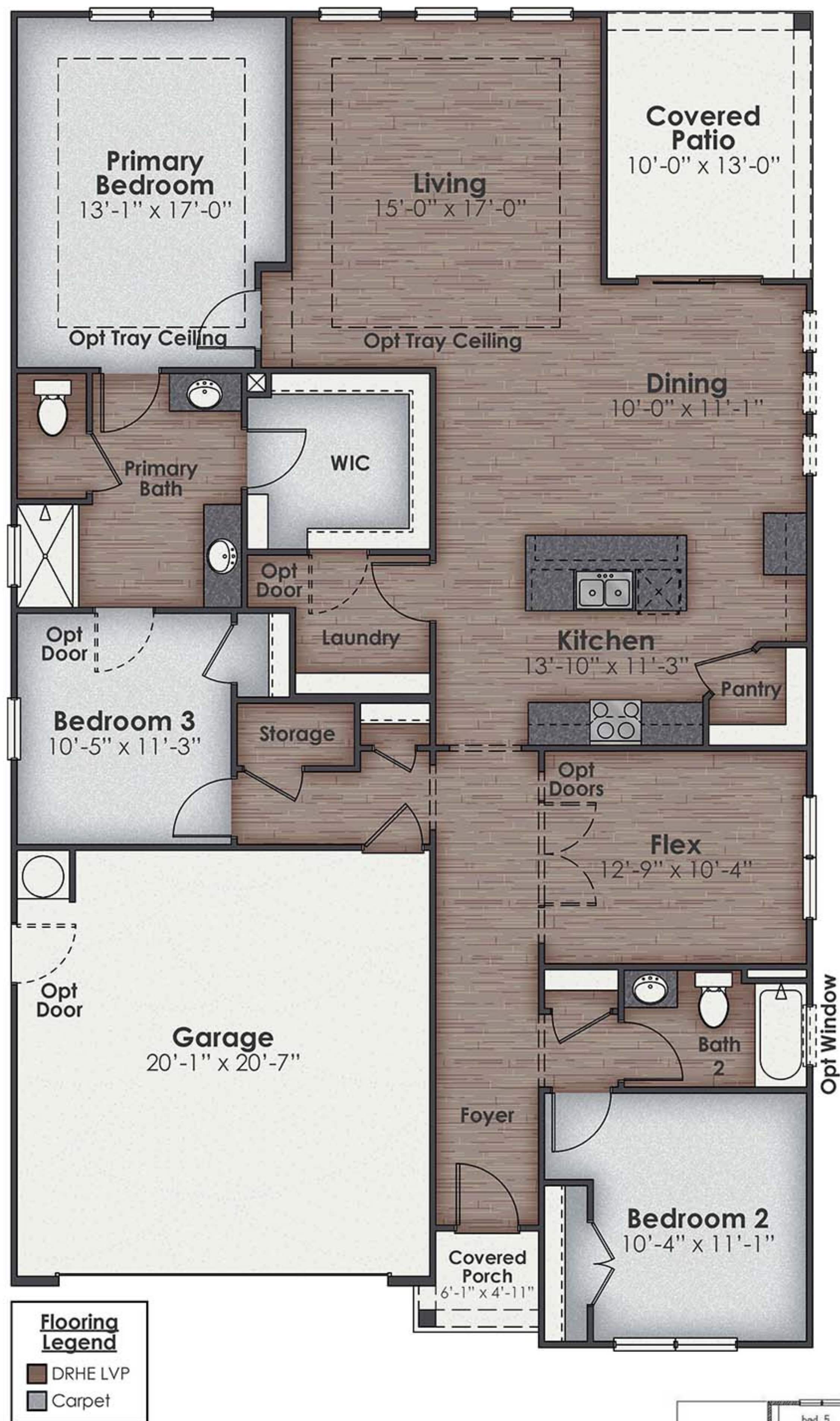
4 Bedrooms, 2 Baths
1774 Sq. Ft., 2-Car Garage



All of our homes include D.R. Horton's Home is Connected[®] package, an industry leading suite of smart home products that keeps homeowners connected with the people and place they value the most. The technology allows homeowners to monitor and control their home from the couch or across the globe. Control the thermostat, front door light and lock, and video doorbell from your smartphone or with voice commands to Alexa!

Darby

3-5 Bedrooms, 2-3 Baths, Flex Room
2368-2671 Sq. Ft., 2-Car Garage



D.R. Horton is an equal housing opportunity builder. Home and community information, including pricing, included features, terms, availability and amenities, are subject to change and prior sale at any time without notice or obligation. Pictures, photographs, features, colors and sizes are approximate for illustration purposes only and will vary from the homes as built. All homes constructed by D.R. Horton, Inc. License #29676.

Pearson TH

3 Bedrooms, 2.5 Baths
1-Car Garage, 1418 Sq. Ft.

Mitchell TH

4 Bedrooms, 2.5 Baths
1-Car Garage, 1554 Sq. Ft.

Belmont TH

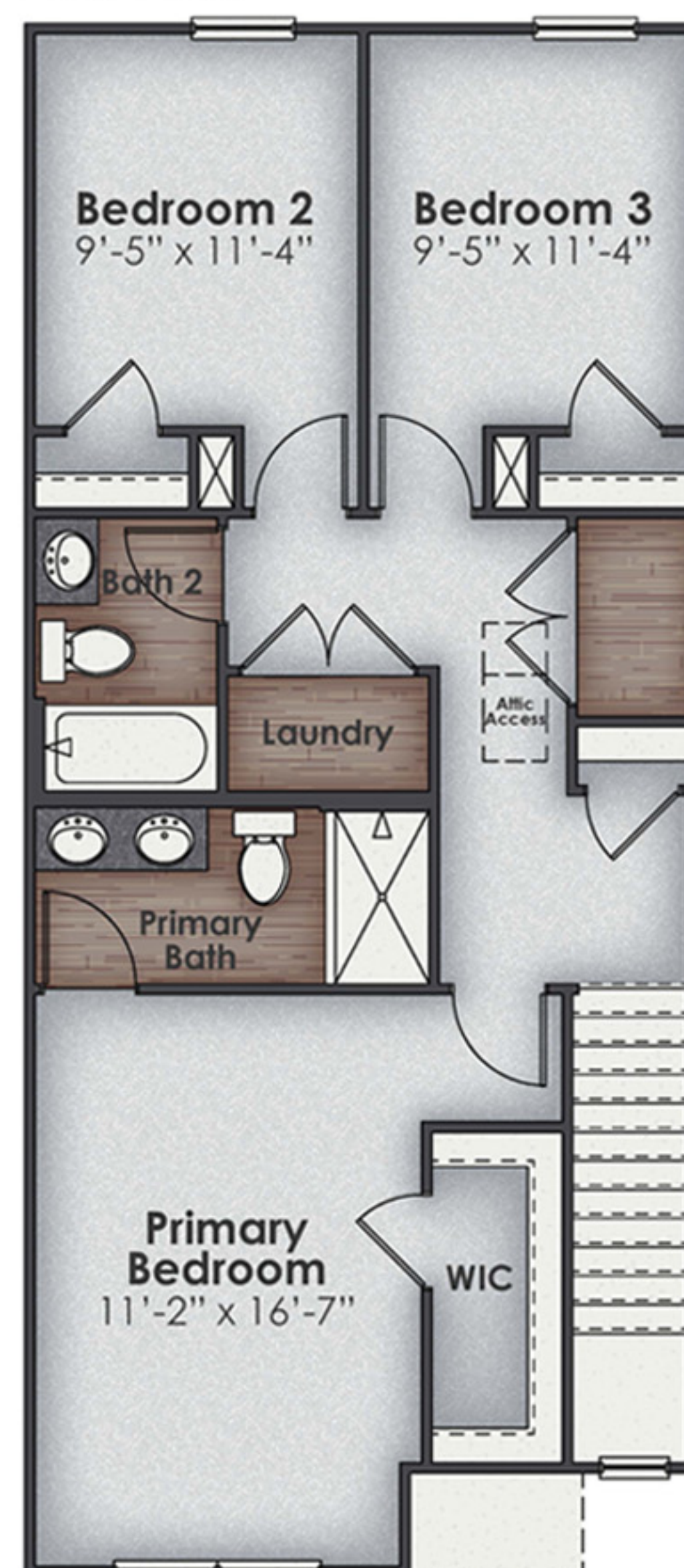
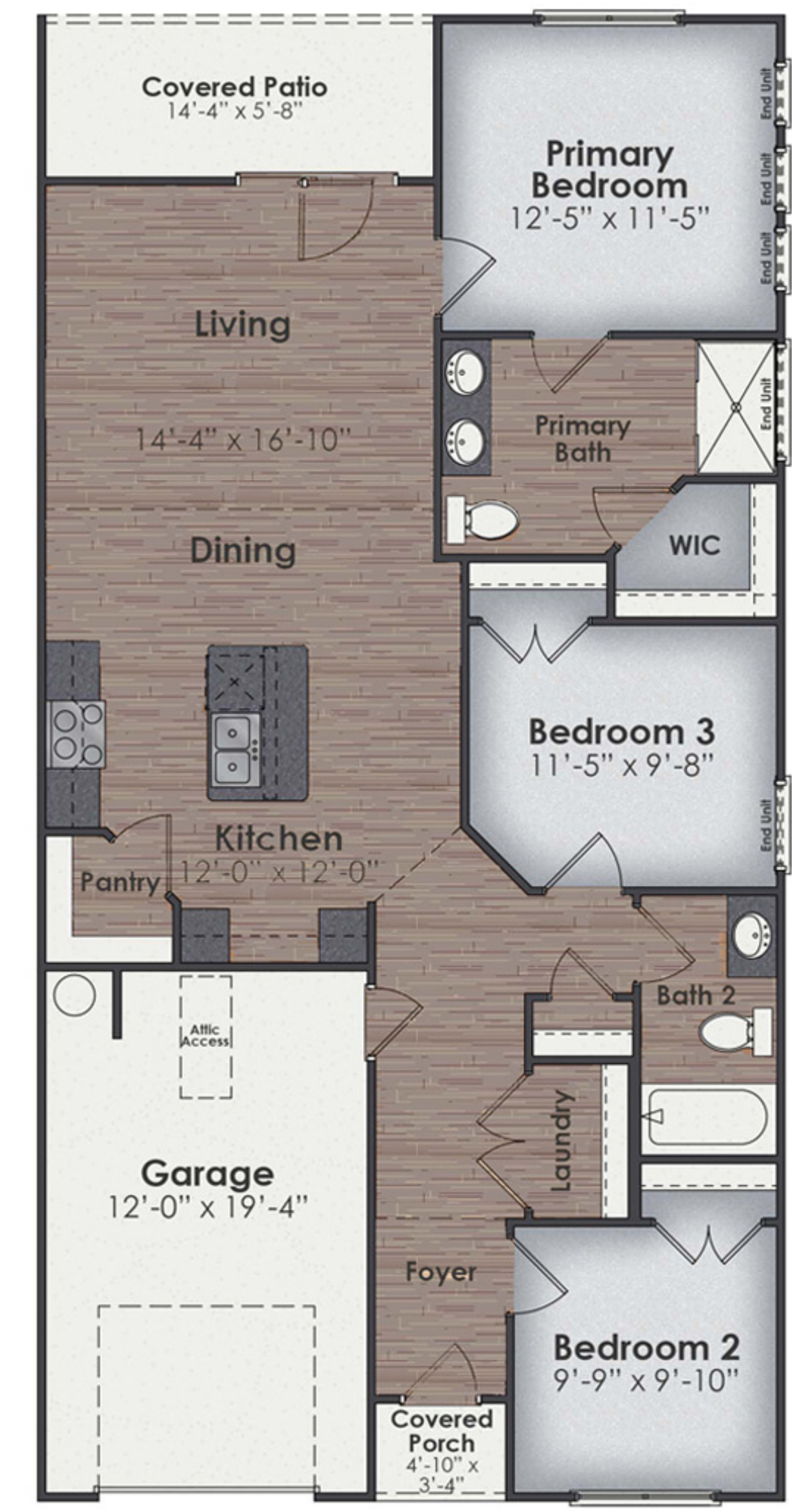
3 Bedrooms, 2 Baths
1-Car Garage, 1186 Sq. Ft.



First Floor



First Floor



Second Floor



Second Floor



All of our homes include D.R. Horton's Home is Connected® package, an industry leading suite of smart home products that keeps homeowners connected with the people and place they value the most. The technology allows homeowners to monitor and control their home from the couch or across the globe. Control the thermostat, front door light and lock, and video doorbell from your smartphone or with voice commands to Alexa!

AMENITIES



Residents will enjoy a fully furnished clubhouse with catering kitchen, elite fitness center, a competition-size swimming pool and kiddie pool, two lighted tennis courts, playground, and walking trails with wooden bridges.

HOMESITES



| Legend | |
|--------|-----------|
| | Mailboxes |



Map is for presentation purposes only. Not drawn to scale.